

Do you want to
contribute your ideas,
shape the challenges of
today and tomorrow
and help contribute to a
more just, equitable and
impactful world? Then
become part of our
growing team!

ES&RE



Fund



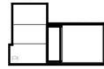
Design



Market



AM



Our team is at the center of everything we do! At ESG RE, we deliver seamless capital, design, management, and marketing solutions that unlock asset performance, elevate portfolios, and future-proof investments across the real estate lifecycle. With a unique vertical structure, ESG RE meets clients where they are — whether improving project/portfolio IRR, strengthening tenant sentiment, de-risking capital, or repositioning portfolios for long-term resilience. Our integrated verticals — fund, design, asset management, and market — compound value across every stage and asset class, delivering measurable, repeatable outcomes. From single assets to portfolios, ESG RE empowers developers, investors, asset managers, owners, and lenders to achieve superior asset design, financial returns, and sustainability performance — all while navigating today's evolving real estate landscape with confidence.

As principle project manager...

- Project management from BD/sales to delivery
- Total stakeholder engagement from owner rep to supply chain
- Own and optimize delivery
- Project risk mitigation
- Create project management tools and on board jr. PM's

Fund



- ✓ ESG-priced debt
- ✓ Enhanced returns
- ✓ Capital efficiency

Design



- ✓ Compounds IRR
- ✓ Reduces risk
- ✓ 1200%+ ROI

AM



- ✓ Risk mitigation
- ✓ 7%+ in asset value
- ✓ NOI optimization

Market



- ✓ Lease-up boost
- ✓ Stabilizes quicker
- ✓ Cap markets story

ESG RE



Fund



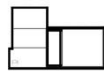
Design



Market



AM



What you'll do from day one...

- Manage ten to fifteen ongoing projects at different fulfilment stages in the real estate lifecycle
- Liaison with all project stakeholders from finance, planning and construction
- Continue to enhance and expand automated CRM
- Track process deliverables via definitive task-based dependencies
- Reel in accurate ESG data from supply chain, post model
- Monitor, assess and guide verticals in the marketplace in leu of client needs and demands
- Work with and support junior project managers to ensure seamless vertical process in project delivery
- Takeover vertical revenue to drive calculated growth
- Act as key client contact for asset's ESG-Rated asset fulfilment
- Assigning and delegating tasks to team members
- Managing detailed vertical management plans for multiple project delivery
- Create new PM tools and methods for flawless execution



Fund



Design



Market



AM



ESG RE's fully integrated verticals are unlimited throughout asset class specificity, have no project stage limitations, or zero negative cost-drivers whatsoever. Its ability to seamlessly apply across all asset classes is a strategic unlock for you're portfolio - NY Developer

PROVEN PERFORMANCE AT SCALE

Results from ESG RE Vertical Integration

Asset Type	IRR Lift	DSCR	CapEx Saved	Equity at Risk
Multifamily	+8.2%	+35-55bps	\$5.6M per asset	14% avg. drop
Mixed-use	+9.1%	+45-60bps	\$7.4M per asset	17% avg. drop
Hospitality	+8.9%	+50bps	\$6.7M per asset	16% avg. drop
Tower	+7.8%	+35-40bps	\$11.1M per asset	13% avg. drop
Industrial	+9.4%	+40-55bps	\$6.3M per asset	15% avg. drop
Portfolio	+8.68%	+42 bps	\$6.82M	15%

ESG RE | ALL VERTICAL ROI 1200%+



Any questions about the role or to discuss strategic opportunities... don't hesitate to get in touch. Interested in joining our team please send your details to team@esg-re.com

ESG RE



Fund



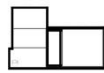
Design



Market



AM



ESSE RE



Fund



Design



Market



AM